



Designed & Assembled in the USA



ALPR License Plate Camera
Model: CHITA-ALPR-HDB

Specifications

Image Sensor	Sony STARVIS Diagonal 6.23mm
Effective Pixels	1985(H)×1105(V)
Video Frame Rate	Full HD 30fps Progressive Scan
Video Output (XVI)	1-channel Hi Definition 1080p (Green BNC) HDCVI (Default) / HDTV / HDAHD Switchable 1-Channel BNC CVBS Analog (Yellow BNC)
Lens	6-22 mm motorized Lens with auto focus
Power	DC12V±10% 1.2A
Capture Distance	up to 50 feet
Capture Speed	up to 120 mph
Operating Environment	IP67 & IK10 Water jet Weather Protection
Operating Temperature	- 22F to 140 F
ALPR Capture	Optional CMC TECH iLPR Capture Box



Installation

1. Power Requirement 2.1mm Power connector, Center Positive.
Minimum: 12VDC 2A Power supply, 18/2 AWG Copper cable
DO NOT USE CAT5, CAT6 or other low quality CCA power cable.
2. Lens Adjustment Auto Focus, Zoom in/out, Focus Near/Far
By using built-in Joystick,
PTZ Control Function CVI, TVI and AHD supported
3. OSD Menu Control Exposure: Bright / Dim, Image Vertical / Horizontal Flip / Mirror

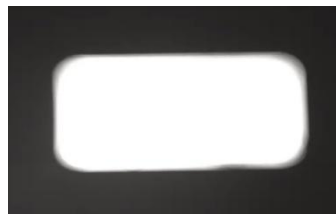
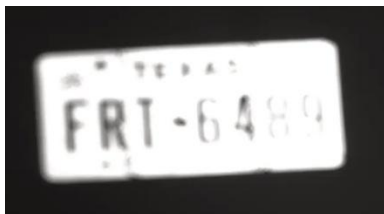
Installation procedure (Recommended)

1. Park your vehicle at the desired capture location
2. Point the camera, adjust zoom and focus on your vehicle's license plate, press the zoom in / out button, the camera should auto-focus on your plate.
3. Fine tune the focus using the Focus near / far button
4. Playback on your DVR to ensure the captured image provides a clear image of the plate.

Examples:



This is an example of your plate should look like.



Out of Focus: fine tune the focus using far and near buttons



If your plate is too bright, enter the OSD Menu → Select EXPOSURE → Change IRIS to Dim from Bright



Select RETURN → Select EXIT on MENU to save setting.